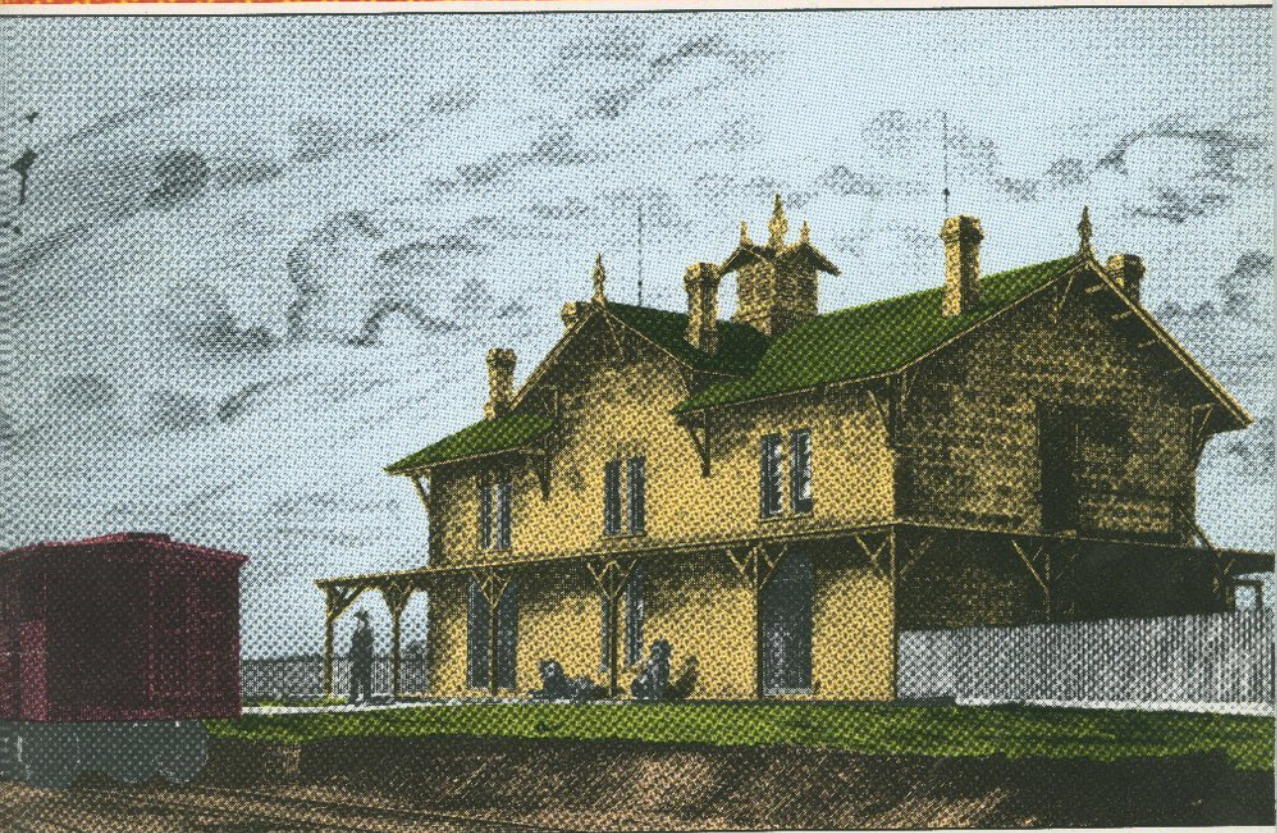


KANSAS HISTORY

A Journal
of the
Central Plains
Volume 9, Number 3
Autumn 1986



Kansas State Historical Society

Joseph W. Snell, *Executive Director*
Robert W. Richmond, *Assistant Executive Director*

EXECUTIVE COMMITTEE

Clifford R. Hope, Jr., Garden City, *Chairman*
William H. Seiler, Emporia, *Vice-Chairman*
Harry J. Briscoe, Topeka
James L. Forsythe, Hays
Roy Wilford Riegler, Emporia
Homer E. Socolofsky, Manhattan
Floyd R. Souders, Cheney
Calvin Strowig, Abilene
Paul E. Wilson, Lawrence

OFFICERS

Donald F. Danker, Topeka, *President*
Glee Smith, Jr., Larned, *First Vice-President*
J. Eric Engstrom, Wichita, *Second Vice-President*
Joseph W. Snell, Topeka, *Secretary*
Robert W. Richmond, Topeka, *Treasurer*

Ex officio members

Donald F. Danker, Topeka
Glee Smith, Jr., Larned
J. Eric Engstrom, Wichita
Helen L. Smith, Colby

THE KANSAS STATE HISTORICAL SOCIETY was organized in 1875 by the newspaper editors and publishers of the state, and four years later it became the official trustee for the state's historical collections. Since then, the Society has operated both as a non-profit membership organization and as a specially recognized society supported by appropriations from the state of Kansas.

The purposes of the Society are the advancement of knowledge about and the preservation of resources related to the history and prehistory of Kansas and the American West, accomplished through educational and cultural programs, the provision of research services, and the protection of historic properties. The Society is governed by a ninety-nine-member board of directors, elected by the membership, and is administered by an executive director and an assistant executive director.

Cover: Victoria Station on the Kansas Pacific Railway was the arrival point for passengers coming to Victoria colony and the headquarters for the colony's founder, George Grant.

During the nineteenth century, the United States witnessed experimentation with and establishment of numerous colony/community settlements. While many of these were distinctive for their religious or ethnic foundations, others were intended as and promoted for the entrepreneurial ventures that they were.

The new Kansas Museum of History features exhibits and educational programs based on the Society's rich artifact collections. It is located near the historic Pottawatomie Baptist Mission west of Topeka, adjacent to Interstate 70. All other Society departments remain at the Center for Historical Research, Memorial Building, across the street from the State Capitol in Topeka.

All persons interested in Kansas history and prehistory are cordially invited to join the Society. Those who would like to provide additional support for the Society's work may want to consider contributions in the form of gifts or bequests. A representative of the Society will be glad to consult with anyone wishing to make such a gift or establish a bequest or an endowment. Address the Executive Director, 120 West Tenth Street, Topeka, Kansas 66612-1291.

One such venture, located in western Kansas, was George Grant's Victoria colony. Two articles in this issue of *Kansas History* are devoted to an examination of the colony, the reasons for its failure, and the myths that surround the colony's founder.

The cover illustration originally appeared in an 1870s volume on the livestock industry in the West. The engraving has been reworked with color by Chris Prouty, the Society's graphic designer at the Kansas Museum of History.

KANSAS HISTORY

Volume 9 Autumn 1986 Number 3

Kansas History (USPS 290 620) is published quarterly by the Kansas State Historical Society, 120 West Tenth Street, Topeka, Kansas 66612-1291. It is distributed without charge to members of the Kansas State Historical Society. Membership dues are as follows: student, \$7.50; individual, \$15.00; family, \$25.00; organization, \$25.00; corporate (annual), \$100.00; life, \$500.00. Membership dues should be sent to Robert W. Richmond, treasurer. Single issues, when available, are \$4.00.

The Society assumes no responsibility for statements of fact or opinion made by contributors.

Second-class postage paid at Topeka, Kansas. Postmaster: Send address changes to *Kansas History*, 120 West Tenth Street, Topeka, Kansas 66612-1291.

Copyright © 1986 Kansas State Historical Society. ISSN 0149-9114.

Articles appearing in *Kansas History* are abstracted and/or indexed in *Historical Abstracts* and *America: History and Life*.

Layout and production: H. M. Ives and Sons, Inc.

Typesetting: H. M. Ives and Sons, Inc.

Printed by H. M. Ives and Sons, Inc.
Topeka, Kansas

Marilyn J. Holt, *Editor*
Dot E. Taylor, *Associate Editor*
Bobbie Pray, *Associate Editor*

George Grant of Victoria: Man and Myth	102
<i>by James L. Forsythe</i>	
Victoria Vanquished: The Scottish Press and the Failure of George Grant's Colony	115
<i>by Brian P. Birch</i>	
Charles M. Sheldon and the Uplift of Tennesseetown	125
<i>by Timothy Miller</i>	
Kansas Frontierwomen Viewed Through Their Writings: The Journal of Carrie Robbins	138
<i>edited by Glenda Riley</i>	
Book Reviews	146
Book Notes	148
Picture Credits	149
