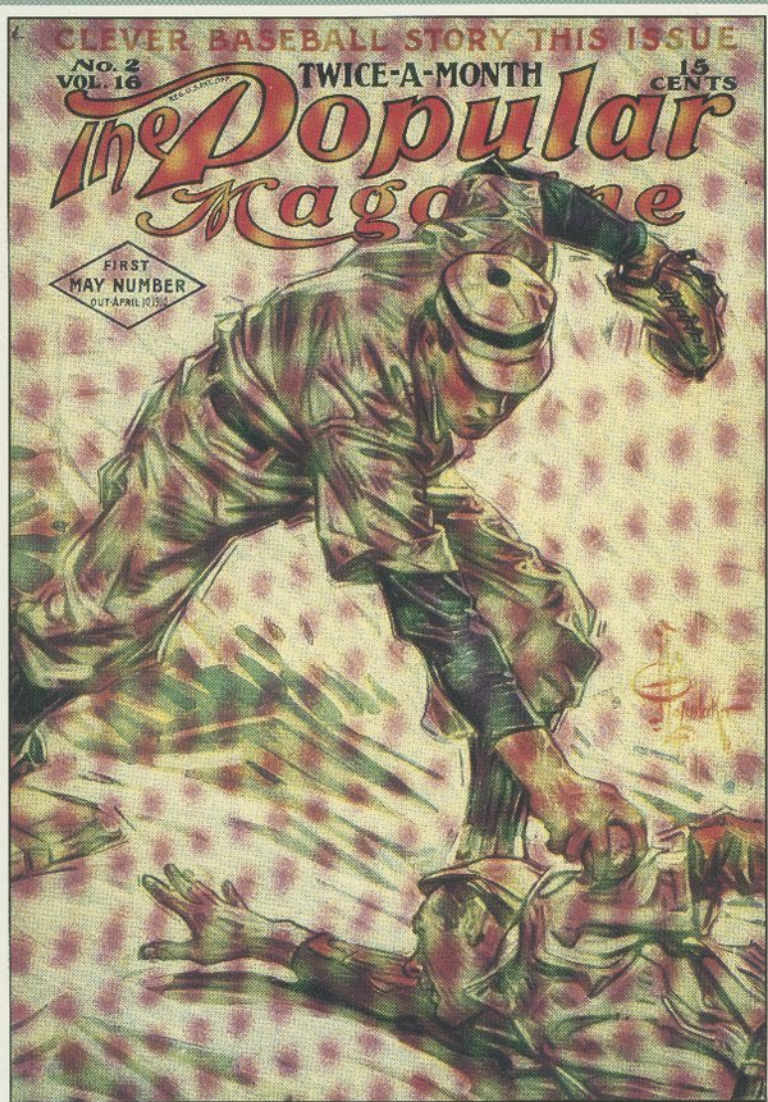


# KANSAS HISTORY

A Journal  
of the  
Central Plains

Volume 11, Number 2  
Summer 1988





---

# Kansas State Historical Society

---

Ramon S. Powers, *Executive Director*

## EXECUTIVE COMMITTEE

Clifford R. Hope, Jr., Garden City, *Chairman*

James L. Forsythe, Hays, *Vice-Chairman*

Harry J. Briscoe, Topeka

Karen M. Graves, Salina

Homer E. Socolofsky, Manhattan

Floyd R. Souders, Cheney

Calvin Strowig, Abilene

Paul E. Wilson, Lawrence

## OFFICERS

J. Eric Engstrom, Wichita, *President*

R. Reed Whitaker, Overland Park, *First Vice-President*

Ellen May Stanley, Dighton, *Second Vice-President*

Ramon S. Powers, Topeka, *Secretary*

Robert W. Richmond, Topeka, *Treasurer*

## Ex officio members

J. Eric Engstrom, Wichita

R. Reed Whitaker, Overland Park

Ellen May Stanley, Dighton

Glee Smith, Larned

---

**T**HE KANSAS STATE HISTORICAL SOCIETY was organized in 1875 by the newspaper editors and publishers of the state, and four years later it became the official trustee for the state's historical collections. Since then, the Society has operated both as a non-profit membership organization and as a specially recognized society supported by appropriations from the state of Kansas.

The purposes of the Society are the advancement of knowledge about and the preservation of resources related to the history and prehistory of Kansas and the American West, accomplished through educational and cultural programs, the provision of research services, and the protection of historic properties. The Society is governed by a ninety-nine-member board of directors, elected by the membership, and is administered by an executive director and an assistant executive director.

The new Kansas Museum of History features exhibits and educational programs based on the Society's rich artifact collections. It is located near the historic Pottawatomie Baptist Mission west of Topeka, adjacent to Interstate 70. All other Society departments remain at the Center for Historical Research, Memorial Building, across the street from the State Capitol in Topeka.

All persons interested in Kansas history and prehistory are cordially invited to join the Society. Those who would like to provide additional support for the Society's work may want to consider contributions in the form of gifts or bequests. A representative of the Society will be glad to consult with anyone wishing to make such a gift or establish a bequest or an endowment. Address the Executive Director, 120 West Tenth Street, Topeka, Kansas 66612-1291.

---

**Cover:** In the summer of 1907, Walter "Big Train" Johnson pitched his first game with the Washington Senators; in early summer 1861, two Kansans with pro-southern sympathies raised a company to fight with the Confederacy; in 1943, E. Gail Carpenter reported on Victory gardens and the Sicily invasion; and in 1936, gubernatorial candidates defied the sweltering Kansas summer in a quest for votes.

Baseball, the game of summer, is illustrated on the cover and presented in this issue's article, "Sunflower

Stars: Big Leaguers from Kansas," while the turmoil of the Civil War is featured in "Divided Loyalties in Civil War Kansas." The Newelletters, written by E. Gail Carpenter during the Second World War, are continued, and an examination of Kansas politics is presented in "Huxman versus West: The Gubernatorial Race of 1936." The winner, Huxman, is shown in the back cover photograph riding to the 1939 inauguration of his successor, Payne Ratner.

---

# KANSAS HISTORY

Volume 11 Summer 1988 Number 2

*Kansas History* (USPS 290 620) is published quarterly by the Kansas State Historical Society, 120 West Tenth Street, Topeka, Kansas 66612-1291. It is distributed without charge to members of the Kansas State Historical Society. Membership dues are as follows: student, \$7.50; individual, \$15.00; family, \$25.00; organization, \$25.00; corporate (annual), \$100.00; life, \$500.00. Membership dues should be sent to Robert W. Richmond, treasurer. Single issues, when available, are \$4.00.

The Society assumes no responsibility for statements of fact or opinion made by contributors.

Second-class postage paid at Topeka, Kansas. Postmaster: Send address changes to *Kansas History*, 120 West Tenth Street, Topeka, Kansas 66612-1291.

Copyright © 1988 Kansas State Historical Society. ISSN 0149-9114.

Articles appearing in *Kansas History* are abstracted and/or indexed in *Historical Abstracts* and *America: History and Life*.

Layout and production: H. M. Ives and Sons, Inc.

Typesetting: H. M. Ives and Sons, Inc.

Printed by H. M. Ives and Sons, Inc., Topeka, Kansas

Marilyn J. Holt, *Editor*  
Bobbie Pray, *Associate Editor*  
Dot E. Taylor, *Associate Editor*

**Sunflower Stars: Big Leaguers from Kansas** 80

*by Thomas S. Busch*

**Divided Loyalties in Civil War Kansas** 93

*by Gary L. Cheatham*

**Huxman versus West: The Gubernatorial Race of 1936** 108

*by Shane N. Galentine*

**The Newletters: E. Gail Carpenter Describes Life on the Home Front Part II** 123

*edited by Charles William Sloan, Jr.*

**Book Reviews** 143

**Book Notes** 147

**Kansas Bookshelf** 148



223PLU  
\$400

