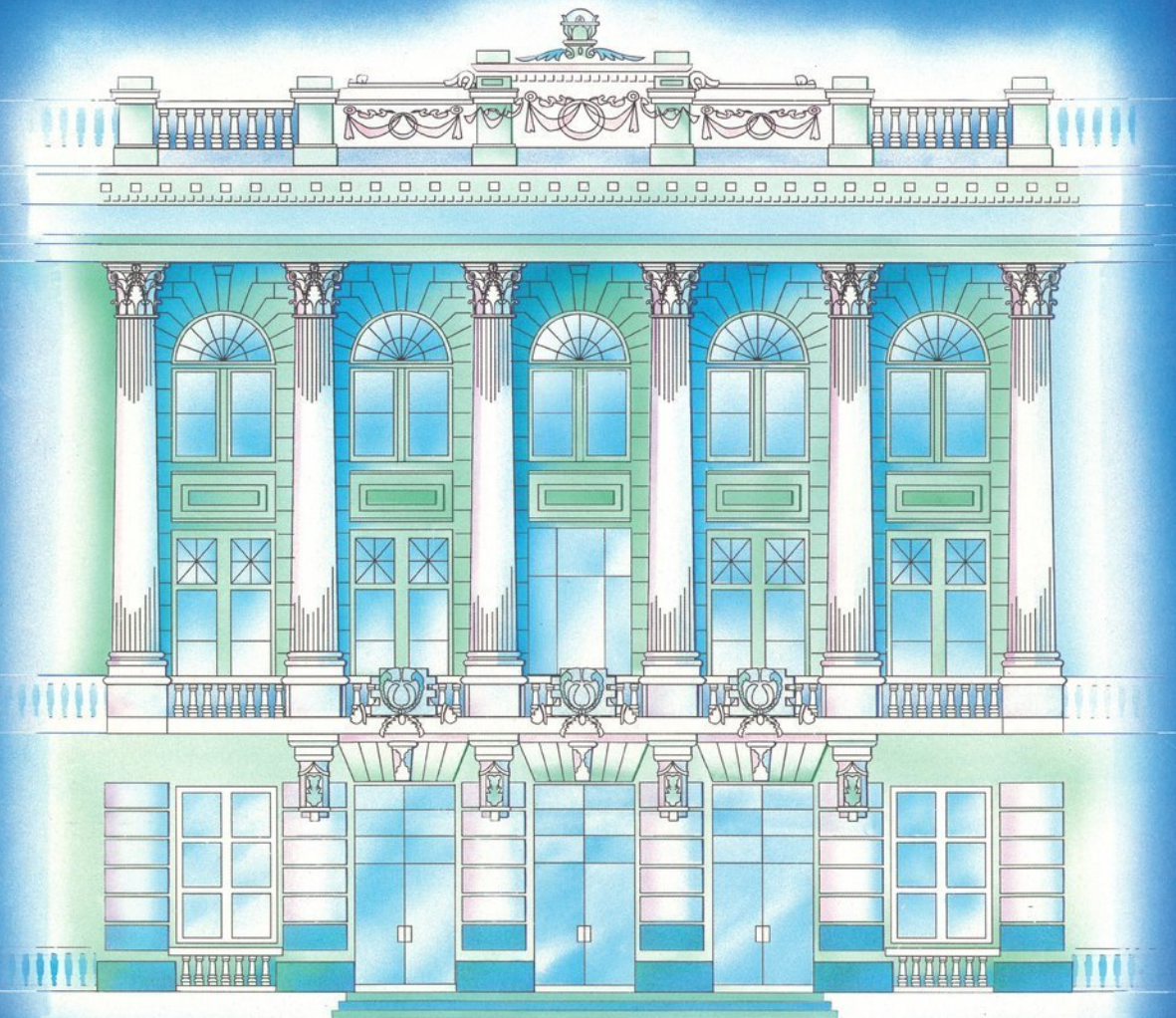


KANSAS HISTORY

A Journal
of the
Central Plains

Volume 18, Number 3
Autumn 1995

SPECIAL ISSUE: *The Memorial Building*





Library Reading Room, Second Floor, Memorial Building, 1920s.

Although built as a monument to the Union veterans of the Civil War, the Memorial Building also was designed to provide spacious, comfortable new facilities for the Kansas State Historical Society. An additional benefit from the perspective of state lawmakers and other officials was that moving the Society out of the statehouse would free up precious space in the recently completed but already cramped state capitol. Yes, a demand for more state office space, similar to the one heard again in the late 1980s, contributed to this initial move across the street after four decades in various statehouse locations.

The task of removing "over 440,000 objects and effects of the State Historical Society from the fourth floor of the statehouse

down one elevator and up another two or three stories, one block off," loomed "like a huge mountain" before Secretary William E. Connelley and his small staff in May 1914. But the job was accomplished, and as this special issue of Kansas History illustrates, the history of the Kansas State Historical Society and the Memorial Building were inextricably linked for the next eighty-one years. The second Historical Society move, an immensely larger "mountain," was surmounted by a greatly expanded staff and a local moving company during the summer of 1995. Will this be the last change of location, or will another move be called for late in the twenty-first century? Or in the twenty-second? Time alone will tell.

KANSAS HISTORY

VIRGIL W. DEAN
Editor

Volume 18

Autumn 1995

Number 3

BOBBIE A. PRAY
Managing Editor

SUSAN S. NOVAK
Associate Editor

Editorial Advisory Board

Thomas Fox Averill
James B. Boyer
Gayle R. Davis
Terry H. Harmon
Thomas D. Isern
Donald R. McCoy
Patricia A. Michaelis
Rita G. Napier

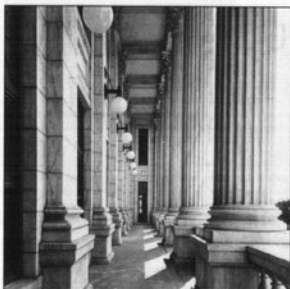
*Ex officio Members of the
Editorial Advisory Board*
Jennie Chinn
James L. Forsythe
David A. Haury
Ramon Powers

Cover: *The Memorial
Building at the corner of
Tenth and Jackson Streets,
Topeka (airbrush illustration
by John Masson). Back cover:
Cornerstone plaque placed on
the south exterior of the
Memorial Building in 1913.*

Copyright © 1995 Kansas State
Historical Society, Inc. ISSN 0149-
9114

Kansas History (USPS 290 620) is pub-
lished quarterly by the Kansas State
Historical Society, Inc., 6425 S.W. Sixth
Avenue, Topeka, Kansas 66615-1099.
Second-class postage paid at Topeka,
Kansas, and additional mailing office.
Postmaster: Send address changes to
Kansas History, 6425 S.W. Sixth Ave-
nue, Topeka, Kansas, 66615-1099.

Printed by Allen Press, Inc.,
Lawrence, Kansas.



p. 143



p. 171



p. 187

THE MEMORIAL BUILDING 140

Introduction

PILLARS OF SOCIETY: 142

A BRIEF HISTORY OF THE
KANSAS STATE
HISTORICAL SOCIETY

by Larry O. Jochims and
Virgil W. Dean

FOUNDATIONS OF OUR PAST: 164

THE ARCHITECTURE OF THE
MEMORIAL BUILDING

by Daniel J. Prosser

REMEMBERING THESE 178

MARBLE HALLS: REFLECTIONS
ON THE MEMORIAL BUILDING

*Reminiscences by Dudley T. Cornish,
Robert W. Richmond, Clifford R.
Hope, Jr., Joseph W. Snell, and
Homer E. Socolofsky*


WINDOWS TO YESTERDAY: 208

THE JOURNALS OF THE
KANSAS STATE
HISTORICAL SOCIETY

by Patricia A. Michaelis

BOOK REVIEWS 222

BOOK NOTES 232



ERECTED BY THE STATE OF
KANSAS AS A MEMORIAL TO
THE UNION SOLDIERS AND
SAILORS OF THE WAR OF THE
REBELLION - 1861 - 1865