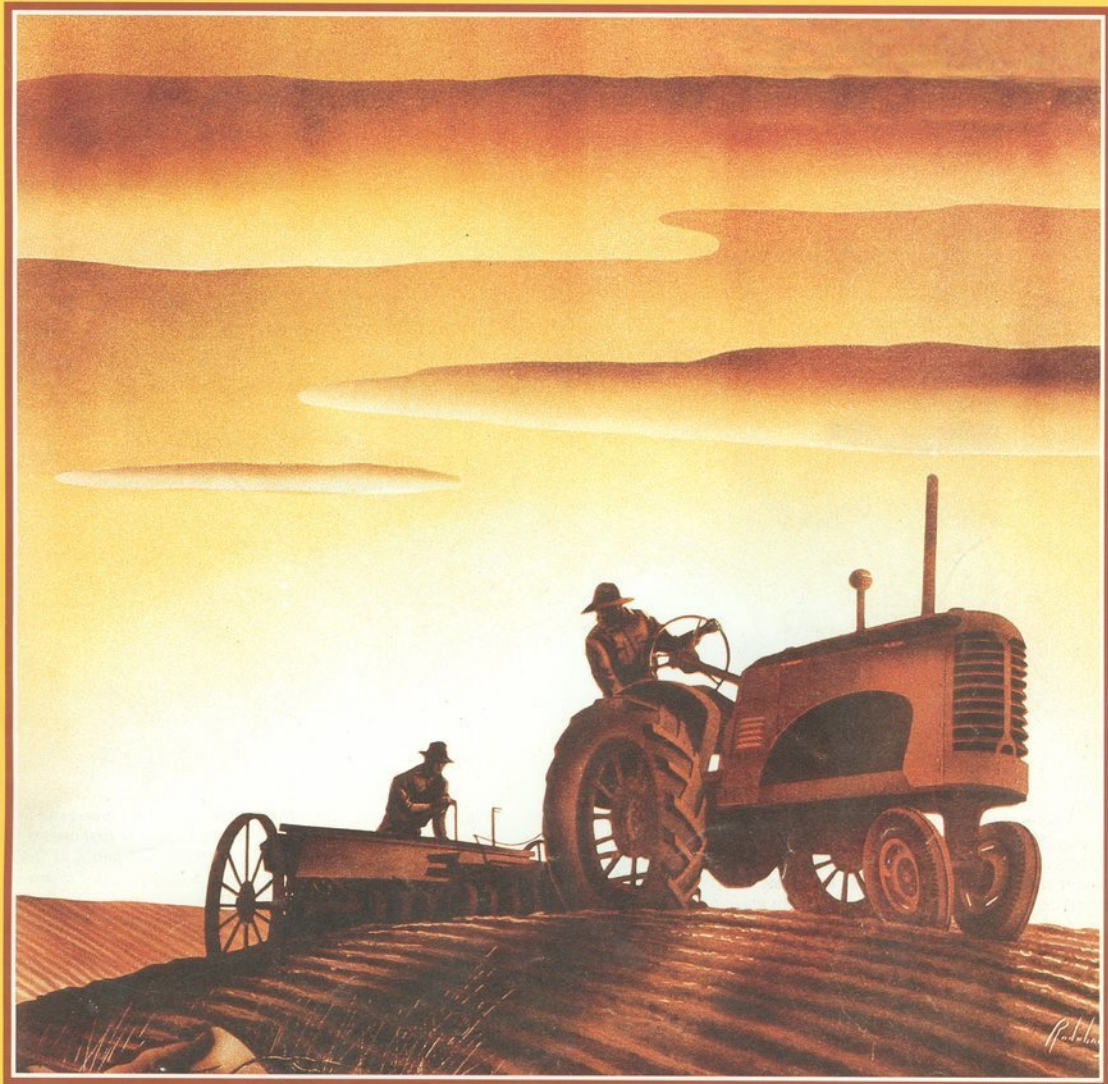
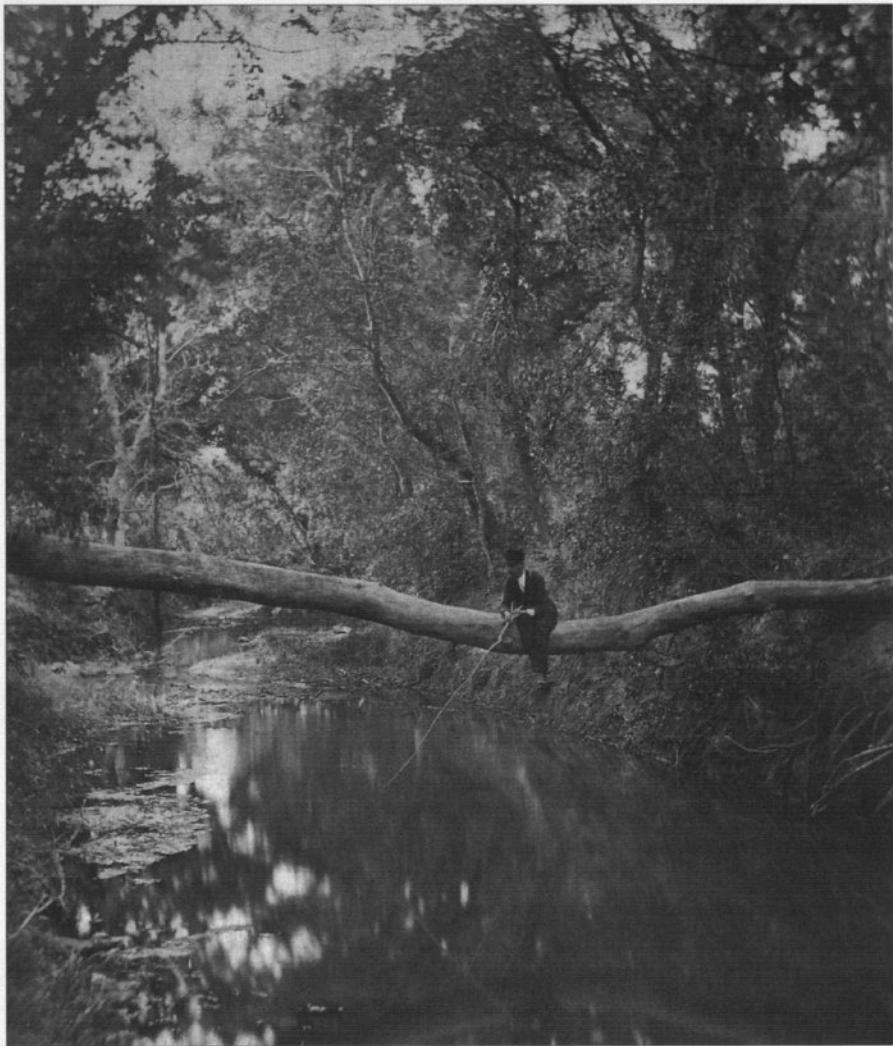


KANSAS HISTORY

A Journal
of the
Central Plains

Volume 19, Number 3
Autumn 1996





"Gems from the Walnut," Walnut Creek, Rush County

Kansas is not a state of great rivers or many navigable waterways, but riparian habitats have always been vital to the inhabitants of this prairie. Fish from the region's rivers and creeks, and more recently innumerable ponds and lakes, have supplemented the diets of "Kansas" families for centuries. In modern times fishing for sport or recreation, such as that depicted in this Rush County photograph, has been a popular diversion for many and a passion for others. Interestingly, while Kansans have not always been perfect stewards of their water resources, they have long been quite mindful of the types of species inhabiting their waters.

As a result, the Kansas legislature created the office of Commissioner of Fisheries in 1877, and by the fall of the next year Fish Commissioner David B. Long was stocking the streams with salmon and shad. Additional species such as black bass and, unfor-

tunately, German carp were introduced in subsequent years, and to facilitate the stocking process a state fish hatchery was first opened near Pratt in February 1904; by October 1912 it was touted as "the largest in the world," with its eighty-three ponds "expected to produce a million fish a year for lakes and streams."

Legislation affecting the fish commissioner and later the state fish and game warden also placed some restrictions — usually unpopular and difficult to enforce — on fishermen. In the 1880s the legislature prescribed penalties for killing or taking fish by the use of explosives, nets, seines, or traps, and the first "closed season" against hook-and-line fishermen was imposed in 1895. Hunters had to pay a license fee by 1905, but it was 1927 before resident anglers, like the man in the photo above, had to pay for the privilege of wetting a line in Kansas waters.

KANSAS HISTORY

VIRGIL W. DEAN
Editor

Volume 19

Autumn 1996

Number 3

BOBBIE A. PRAY
Managing Editor

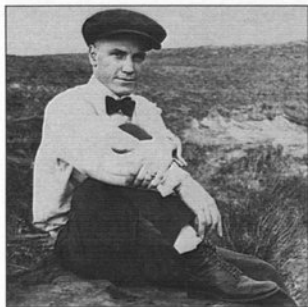
SUSAN S. NOVAK
Associate Editor

Editorial Advisory Board

Thomas Fox Averill
James B. Boyer
Gayle R. Davis
Thomas D. Isern
Donald R. McCoy
Patricia A. Michaelis
Rita G. Napier
James E. Sherow

*Ex officio Members of the
Editorial Advisory Board*
Jennie Chinn
James L. Forsythe
David A. Haury
Ramon Powers

Cover: *Technological
advancements in agriculture,
transportation, and all aspects
of our lives is the subject of
"A Most Original Thinker."*
Back Cover: *A 1932 cartoon
depicts the woes of taxation.
An article on property tax
begins on page 200.*



p. 163



p. 199



p. 201

- FROM COUNTRY DOC TO
PIONEER SURGEON: PROFILE
OF A.C. JOHNSON, D.O.
*by Jana M. Jaderborg and
Sherri Garcia Martin* 162

- A MOST ORIGINAL THINKER:
JAMES C. MALIN ON HISTORY
AND TECHNOLOGY
by Thomas Burnell Colbert 178

- FOLK ENTOMOLOGY IN THE
FLINT HILLS OF KANSAS
by Thomas D. Isern 188

- THE WORST TAX IN THE
CIVILIZED WORLD? PROPERTY
TAX REFORM AND THE
KANSAS TAX COMMISSION
by Glenn W. Fisher 200

- BOOK REVIEWS 216

- BOOK NOTES 222

Copyright © 1996 Kansas State Historical Society, Inc. ISSN 0149-9114

Kansas History (USPS 290 620) is published quarterly by the Kansas State Historical Society, Inc., 6425 S.W. Sixth Avenue, Topeka, Kansas, 66615-1099. It is distributed without charge to members of the Kansas State Historical Society. Membership dues are: student \$15; individual \$25, family \$35; organization \$25; life \$1,000. Single issues, when available, are \$6. Second-class postage paid at Topeka, Kansas, and additional mailing office. Postmaster: Send address changes to *Kansas History*, 6425 S.W. Sixth Avenue, Topeka, Kansas, 66615-1099.

Printed by Allen Press, Inc., Lawrence, Kansas.

From the New Orleans Times-Picayune.

TOO MUCH OVERHEAD!

