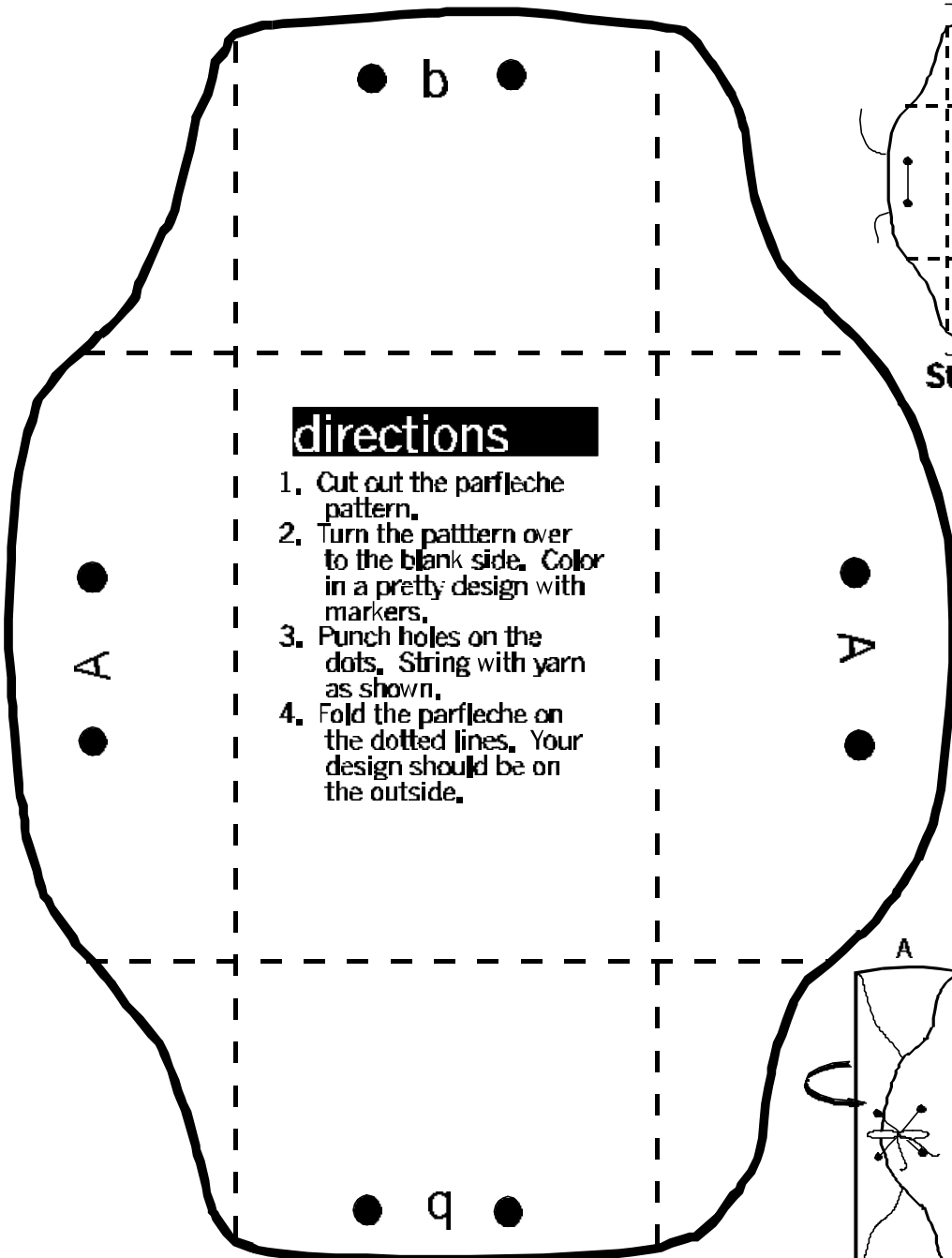


making a parfleche

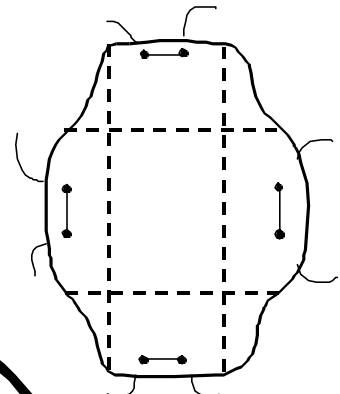
A parfleche is a large envelope of rawhide used by the Plains Indians to pack dried food and other things. Rawhide is untanned buffalo skin. When it is wet it can be bent and molded. For many Indians it takes the place of pottery; wood and bark. Work together to make a paper parfleche.

Materials: Parfleche pattern, scissors, markers and yarn or cord

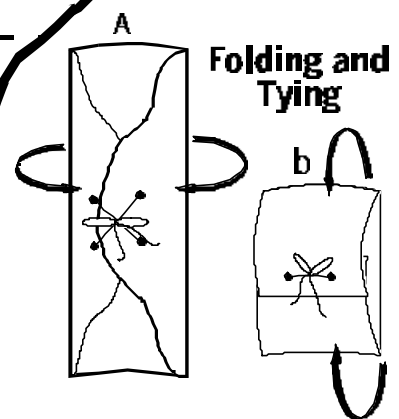


directions

1. Cut out the parfleche pattern.
2. Turn the pattern over to the blank side. Color in a pretty design with markers.
3. Punch holes on the dots. String with yarn as shown.
4. Fold the parfleche on the dotted lines. Your design should be on the outside.



Stringing the Yarn



Folding and Tying

Parfleche Pattern