

United States Department of the Interior
National Park Service

National Register of Historic Places Registration Form

This form is for use in nominating or requesting determinations of eligibility for individual properties or districts. See instructions in *Guidelines for Completing National Register Forms* (National Register Bulletin 16). Complete each item by marking "x" in the appropriate box or by entering the requested information. If an item does not apply to the property being documented, enter "N/A" for "not applicable." For functions, styles, materials, and areas of significance, enter only the categories and subcategories listed in the instructions. For additional space use continuation sheets (Form 10-900a). Type all entries.

1. Name of Property

historic name Burlington United States Post Office

other names/site number Same

2. Location

street & number 107 S. Fourth Street

not for publication

city, town Burlington

vicinity

state Kansas code KS county Coffey code 031 zip code 66839

3. Classification

Ownership of Property

- private
- public-local
- public-State
- public-Federal

Category of Property

- building(s)
- district
- site
- structure
- object

Number of Resources within Property

Contributing Noncontributing

<u>1</u>	_____ buildings
_____	_____ sites
_____	_____ structures
_____	_____ objects
<u>1</u>	_____ Total

Name of related multiple property listing:
Kansas Post Offices that contain Treasury

Number of contributing resources previously listed in the National Register 0

Department Section Artwork, 1936-1942

4. State/Federal Agency Certification

As the designated authority under the National Historic Preservation Act of 1966, as amended, I hereby certify that this nomination request for determination of eligibility meets the documentation standards for registering properties in the National Register of Historic Places and meets the procedural and professional requirements set forth in 36 CFR Part 60. In my opinion, the property meets does not meet the National Register criteria. See continuation sheet.

Ramon Power State Historic Preservation Officer December 15, 1988
Date

Signature of certifying official
Kansas State Historical Society

State or Federal agency and bureau

In my opinion, the property meets does not meet the National Register criteria. See continuation sheet.

Signature of commenting or other official

Date

State or Federal agency and bureau

5. National Park Service Certification

I, hereby, certify that this property is:

- entered in the National Register.
 See continuation sheet.
- determined eligible for the National Register. See continuation sheet.
- determined not eligible for the National Register.
- removed from the National Register.
- other, (explain:)

Signature of the Keeper

Date of Action

031-0690-0016

6. Function or Use

Historic Functions (enter categories from instructions)

Government: Post Office

Current Functions (enter categories from instructions)

Government: Post Office

7. Description

Architectural Classification

(enter categories from instructions)

20th Century Revival: Classical
Revival

Materials (enter categories from instructions)

foundation Concrete

walls Brick

roof Copper

other Composition tar and gravel

Stone: limestone

Describe present and historic physical appearance.

The Burlington United States Post Office (c. 1940-1941) is located at 107 S. Fourth Street in Burlington, Coffey County, Kansas (pop. 2,901). The one-story, ridge hipped roof, buff colored brick and limestone building has an eastern facade orientation. The building measures approximately sixty feet from north to south and sixty feet from east to west, with a loading dock projecting from the northern elevation. On the facade elevation four limestone pilasters support the building's limestone entablature, a recessed limestone wall spans the center of the facade. A double door pierces the center of the building's facade, a large transom surmounts it. Two large windows flank the door, standing in the recessions between the pilasters. A smaller, double hung window fenestrates each of the buff colored brick walls that conclude the facade's treatment. Wide steps lead up to the entrance. The building retains its copper roof. While not a large post office, the Burlington post office employs materials that are more elaborate than most of the post offices constructed in Kansas during the 1930s and 1940s and appears to be a class B post office rather than the more common C or D type.

The sculpture "Boy and Colt" was installed on the south wall of the Burlington Post Office lobby above the postmaster's door and the two bulletin boards that flank it. This is the traditional location for Section artwork in the smaller post offices. "Boy and Colt" is an Arizona red sandstone sculpture showing a boy leaning against a colt, with his right arm cradling the colt's neck and his left arm resting on the colt's hind quarters. The boy is sculpted in a frontal view and the colt is sculpted from a side view. The sculpture measures 3' high by 2'6" wide by 1' deep and stands on a pedestal. A cornice moulding runs along the top of the lobby wall.

The sculpture was installed on December 12, 1942. In August, 1973 the sculpture's condition was assessed as good, it remains as such and according to current information has not been restored.

United States Department of the Interior
National Park Service

**National Register of Historic Places
Continuation Sheet**

Section number 7 Page 1

A varnished, wooden vestibule projects into the lobby, but does not obstruct the sculpture. The vestibule is a traditional design feature found in most of the post offices included in this nomination. The building retains its marble wainscotting. The post master's door and bulletin boards appear to retain their varnished wood surrounds. The original hanging light fixtures were replaced with almost flush mounted fluorescent lights in 1964. In 1965 the ell shaped lobby was reduced to a straight rectangle. The original wood floor was replaced with tiles in 1963.

8. Statement of Significance

Certifying official has considered the significance of this property in relation to other properties:

nationally statewide locally

Applicable National Register Criteria A B C D

Criteria Considerations (Exceptions) A B C D E F G

Areas of Significance (enter categories from instructions)	Period of Significance	Significant Dates
<u>Art</u>	<u>1942</u>	<u>1942</u>
<u>Politics/Government</u>	<u>1942</u>	<u>1942</u>
<u>Social History</u>	<u>1942</u>	<u>1942</u>

Cultural Affiliation

N/A

Significant Person

N/A

Architect/Builder

Kittredge, Robert: Artist

Simon, Louis: Architect

Rokahr, Ernest and Son: Contractor

State significance of property, and justify criteria, criteria considerations, and areas and periods of significance noted above.

The Burlington United States Post Office (c. 1940-1941) is being nominated to the National Register as part of the Kansas Post Office Artwork (1936-1942) Thematic Resources nomination at the local and state levels of significance under criteria A and C for its historical association with the Treasury Department's Section program and for the artistic significance of the sculpture that it contains. The sculpture, "Boy and Colt", was carved by Arizona artist Robert Kittredge in 1942. Because the sculpture is less than fifty years old, criteria consideration G, which allows for exceptional significance in the case of properties achieving significance within the past fifty years, is also a factor. The National Register has identified post offices containing Section artwork as being exceptionally significant if they retain integrity from their period of significance.

"Boy and Colt" is an Arizona red sandstone sculpture showing a boy leaning against a colt, with his right arm cradling the colt's neck and his left arm resting on the colt's hind quarters. The boy is sculpted in a frontal view and the horse colt is sculpted from a side view. It is a very simple sculpture that applies no individual character either to the boy or the colt, allowing each to represent the totality of all boys and all colts. "Boy and Colt" is representative of the social realism that was funded under the Section program.

Kittredge was an Arizona sculptor who was residing in Brandon, Virginia at the time he received the contract for the Burlington Post Office. It is likely that Kittredge did not produce this piece of sculpture specifically for the Burlington Post Office, as it is generic, and was a later commission, coming in the last year of the Section program. Kittredge received the commission on May 29, 1942 and the sculpture was installed on December 12, 1942. "Boy and Colt" was installed on the south wall of the Burlington Post Office lobby above the postmaster's door and the two bulletin boards that flank it. It measures 3' high by 2'6" wide by 1' deep. Kittredge received \$900 for the commission. "Boy and Colt" is among a limited number of sculpture that was installed

See continuation sheet

United States Department of the Interior
National Park Service

National Register of Historic Places Continuation Sheet

Section number 8 Page 1

in Kansas post offices. Sculpture was also installed in the Columbus, Fredonia and Salina post offices. The Burlington Post Office appears to be an example of a class B post office that received Section artwork in Kansas.

Please see the Kansas Post Office Artwork (1936-1942) Thematic Resources cover nomination for additional information.

9. Major Bibliographical References

Falk, Peter Hastings, Who Was Who in American Art. (Madison, CT: Soundview press, 1985).

General Services Administration. Treasury Department's Section Records - Burlington, Kansas.

Svedlow, Dr. Anthony V. (Mulvane Gallery, Washburn University, Topeka, Kansas). Personal interview with Martha Hagedorn-Krass, January 8, 1988.

See continuation sheet

Previous documentation on file (NPS):

- preliminary determination of individual listing (36 CFR 67) has been requested
- previously listed in the National Register
- previously determined eligible by the National Register
- designated a National Historic Landmark
- recorded by Historic American Buildings Survey # _____
- recorded by Historic American Engineering Record # _____

Primary location of additional data:

- State historic preservation office
- Other State agency
- Federal agency
- Local government
- University
- Other

Specify repository:

Kansas State Historical Society

10. Geographical Data

Acreage of property Less than 1 acre.

UTM References

A 1, 5 2 6, 0 4, 0, 0 4, 2 3, 0 7, 0, 0
 Zone Easting Northing

C _____

B _____
 Zone Easting Northing

D _____

See continuation sheet

Verbal Boundary Description

The nominated property is located on Lots 13 and 14, Block 49, Burlington, Kansas. The property is bounded to the east by S. Fourth Street, to the north by a public alley, to the south by Des Moines Street, and to the west by adjacent property lines.

See continuation sheet

Boundary Justification

The boundary includes the entire parcel that is historically associated with the property.

See continuation sheet

11. Form Prepared By

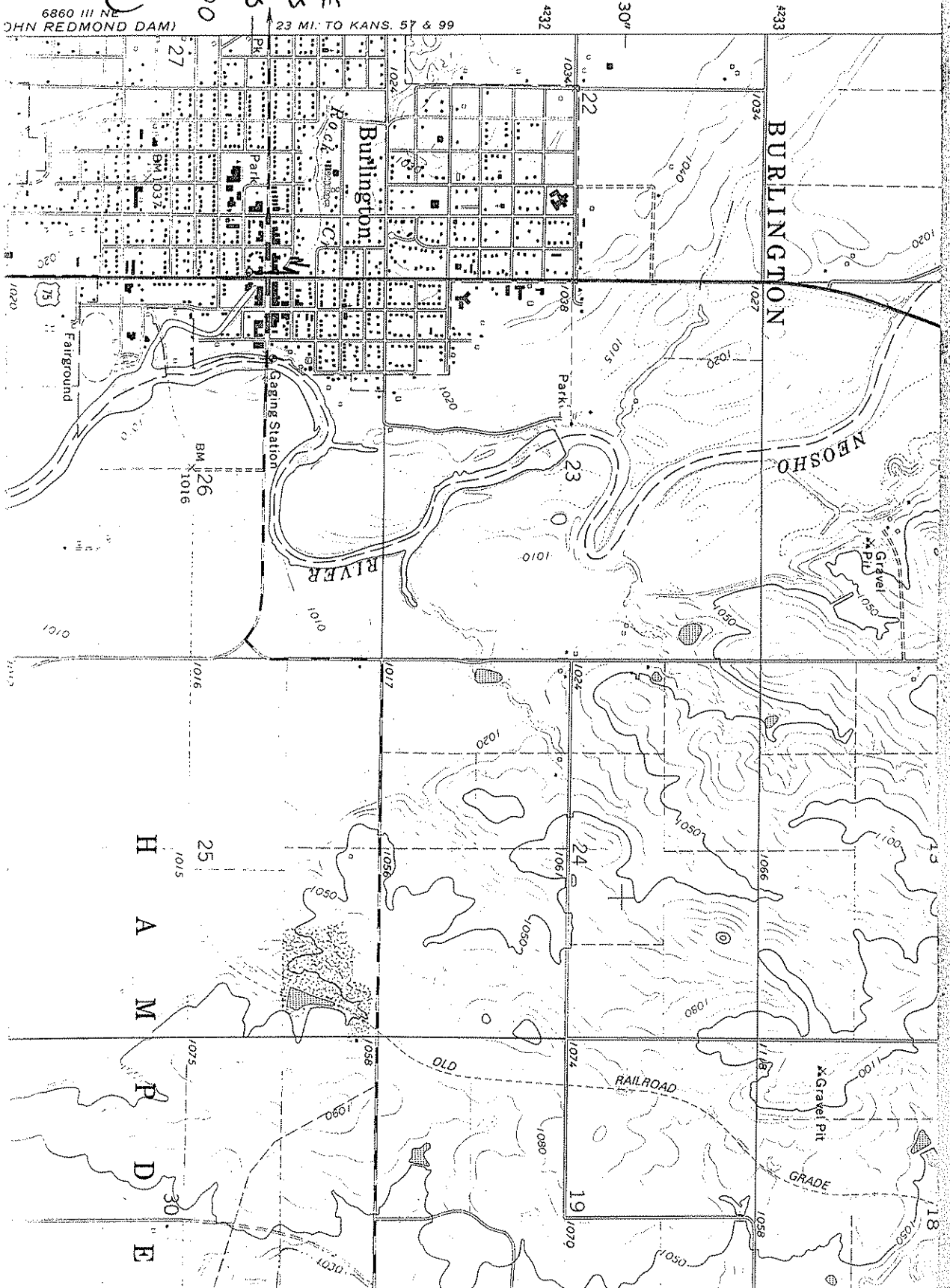
name/title Martha Hagedorn-Krass, Architectural Historian

organization Kansas State Historical Society date December 16, 1988

street & number 120 W. 10th telephone 913-296-5264

city or town Topeka state Kansas zip code 66612

BURLINGTON UNITED STATES POST OFFICE
BURLINGTON, KANSAS
UTM COORDINATES
15 260400 4230700
(BURLINGTON QUADRANGLE)



H
A
M
P
D
E